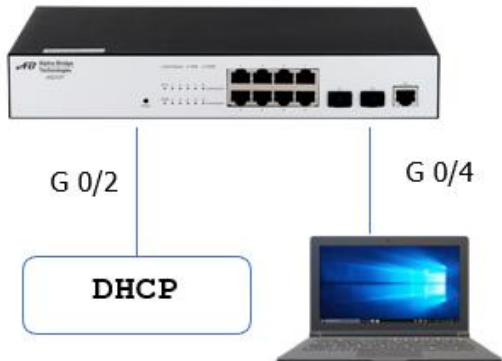
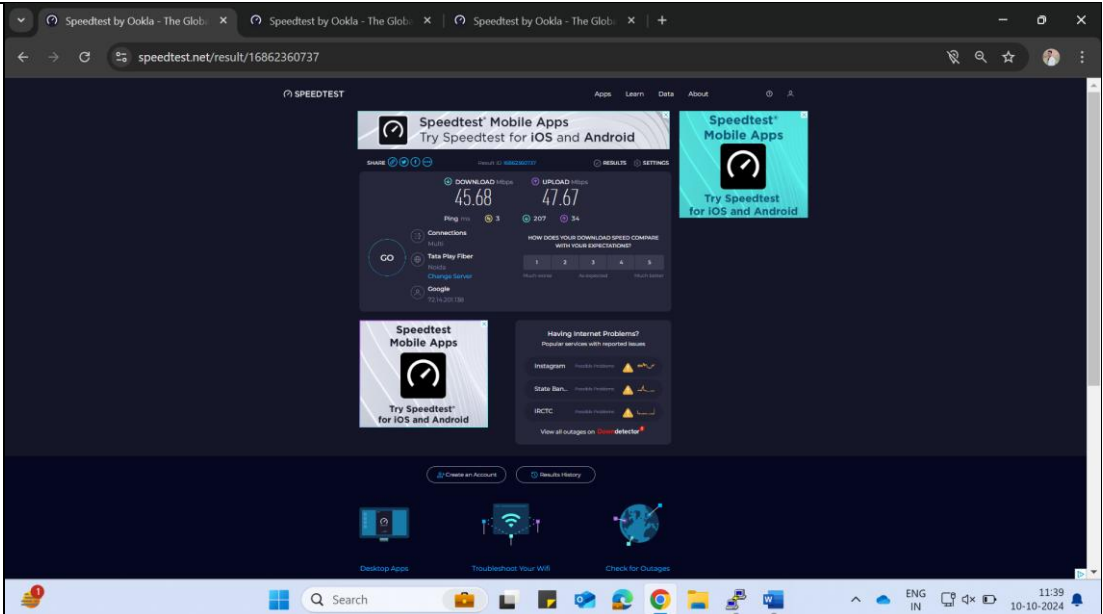
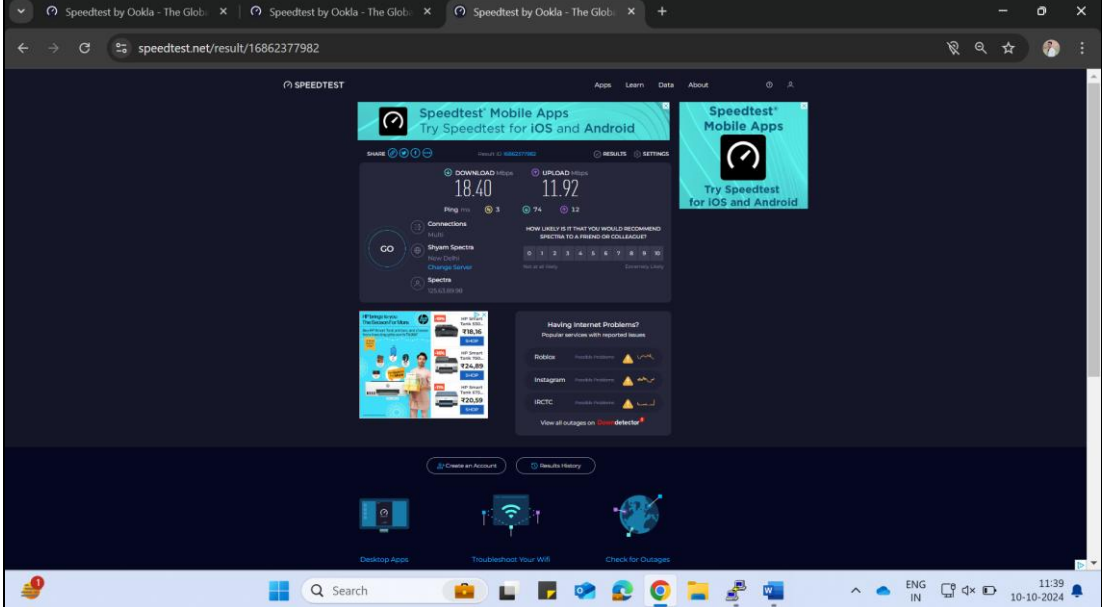


1. Port Rate limit:

Testcase	Rate limiting of bandwidth on the switch ports
Procedure	<ol style="list-style-type: none"> 1. Login to switch using console 2. Configure the switch using below commands for rate limit. 3. Check the Internet speed before and after applying the rate limit. 4. Connect the PC to the port based on the configuration. 5. Test the speed using any browser. <pre>VLAN -1 IP Address of Switch - 192.168.0.1/24</pre> 
Configuration	<p>Switch configuration:</p> <pre>Switch_config#interface gigaEthernet 0/4 //interface on which port want to configure rate limit Switch_config _g0/4#switchport rate-limit 200 ingress //rate limit for ingress for the port 4(upload speed) Switch_config _g0/4#switchport rate-limit 300 egress //rate limit for egress for the port 4(download speed) Switch_config_g0/4#exit Switch_config#</pre>
Test result	<p>Speed test: https://www.speedtest.net/</p> <p>1 unit = 64kbps</p> <p>200 units = 64 * 200 = 12800 kbps = 12.8Mbps</p> <p>300 units = 64 * 300 = 19200 kbps = 19.2Mbps</p> <ul style="list-style-type: none"> • Before configuring rate limit on port



- After configuring rate limit on port



We got 18.40Mbps and 11.92Mbps which is similar to our result.

Remarks Working